

MONTHLY MEMBERSHIP PROGRESS REPORT

District 26 M1

Results as of: 5/31/2025

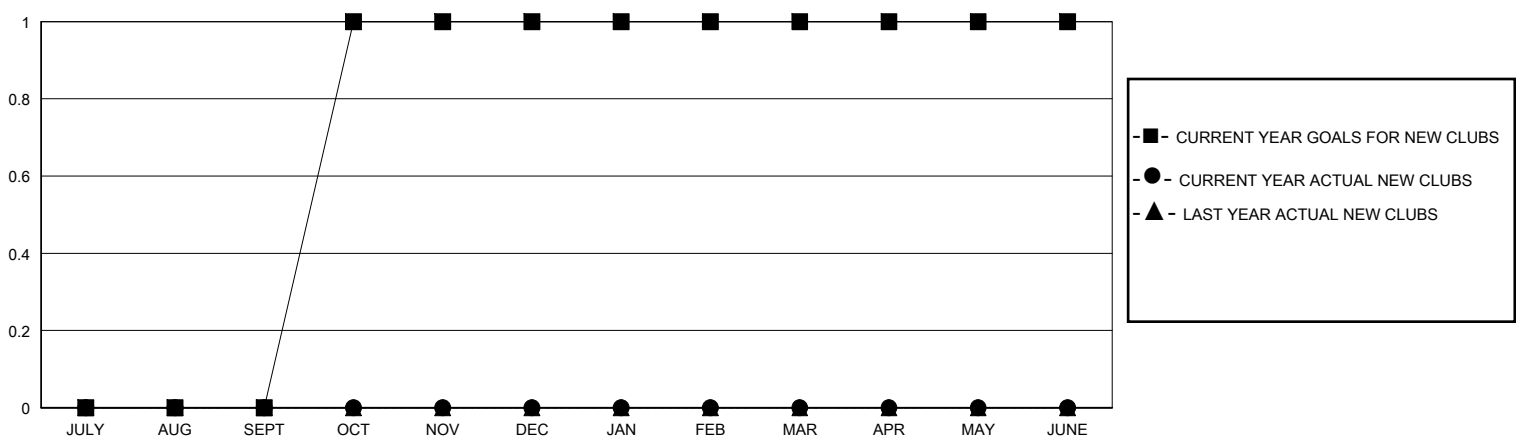
GMT:

LOCATION MISSOURI

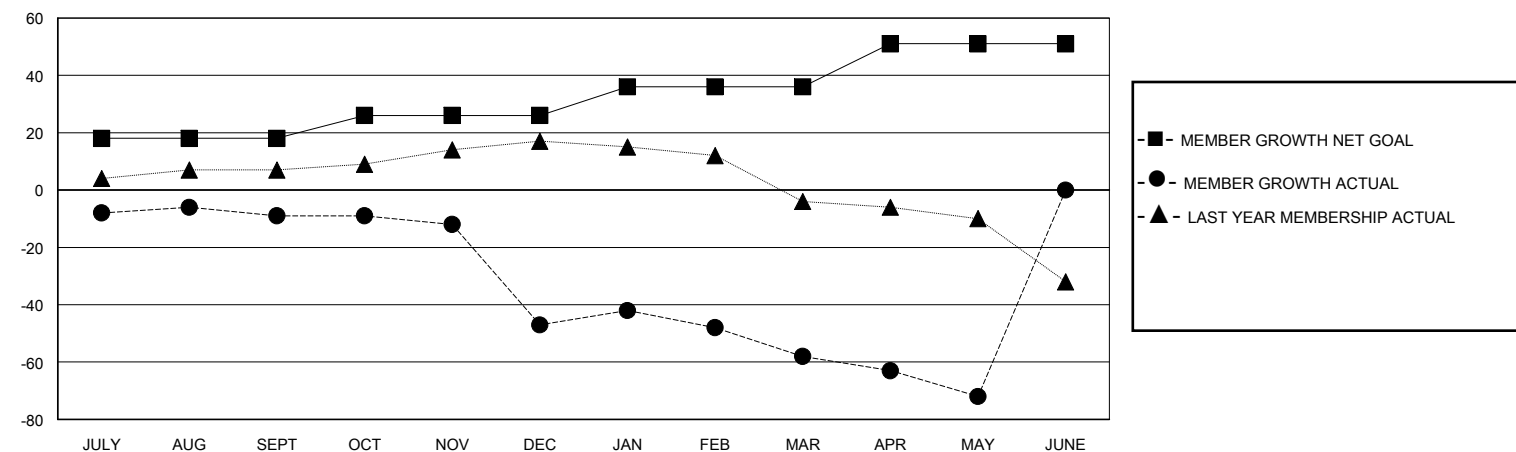
GMT CA

Clubs				Members			
RESULTS FOR 2024-2025				RESULTS FOR 2024-2025			
QUARTER	NEW CLUB GOAL	NEW CLUBS	DROPPED CLUBS	QUARTER	MEMBER GROWTH NET GOAL	MEMBER GROWTH ACTUAL	DROPPED MEMBERS ACTUAL (including transfers)
JULY/AUG/SEPT	0	0	1	JULY/AUG/SEPT	18	13	20
OCT/NOV/DEC	1	0	2	OCT/NOV/DEC	8	5	43
JAN/FEB/MAR	0	0	0	JAN/FEB/MAR	10	25	30
APR/MAY/JUNE	0	0	0	APR/MAY/JUNE	15	7	19

GOALS AND ACTUAL NEW CLUBS CUMULATIVE



GOALS AND ACTUAL MEMBERS CUMULATIVE



DROPPED CLUBS: 3	14 CLUBS OF 35 ADDED 1 OR MORE NEW MEMBERS	<u>GENDER DISTRIBUTION</u> MALE 659 (74.13%) FEMALE 230 (25.87%)
<u>DROPPED MEMBERS</u> DECEASED 10 CLUB CANCELLED 27 OTHER 75 TOTAL 112	<a href="#">CLICK HERE FOR CUMULATIVE MEMBERSHIP DATA</a>	TOTAL FAMILY UNIT MEMBERS 98 FAMILY MEMBERS PAYING HALF DUES 49